



EstesRockets.com

STAR HOPPER™

1721/7303



MODEL ROCKET INSTRUCTIONS

KEEP FOR FUTURE REFERENCE

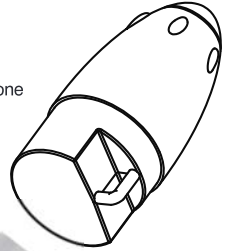
IMPORTANT: Please record date found on decal and keep for future reference. _____

Read all instructions. Make sure you have all parts and supplies.

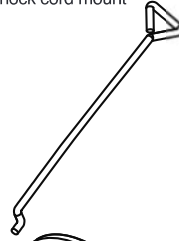


09001-1721
Self-stick decal

073219
Nose cone



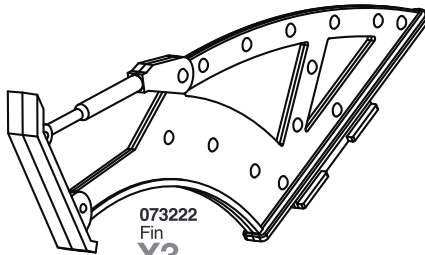
073224
Shock cord mount



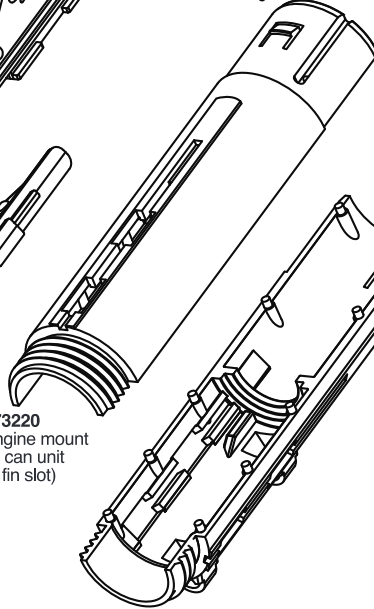
030408
Body tube



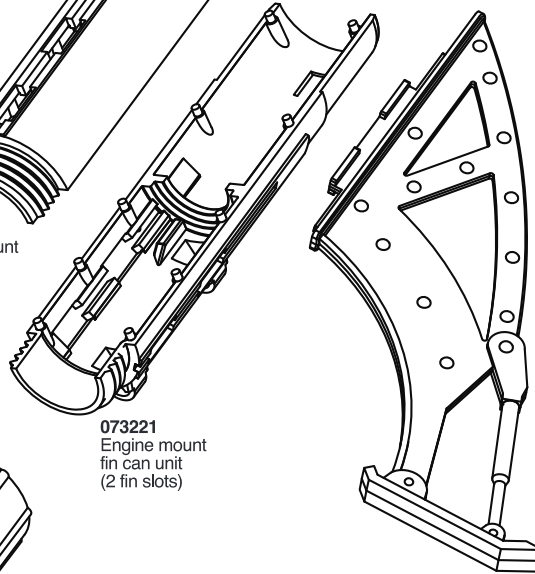
073222
Fin
X3



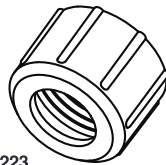
073220
Engine mount
fin can unit
(1 fin slot)



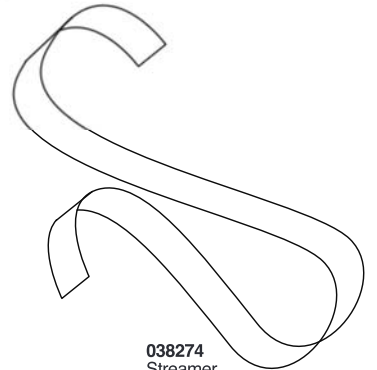
073221
Engine mount
fin can unit
(2 fin slots)



073223
Engine retainer cap



038274
Streamer

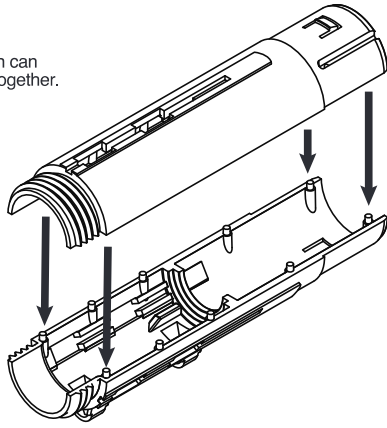


038366
Shock cord

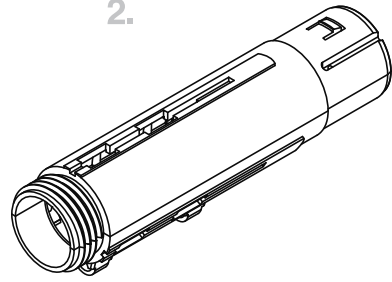


ASSEMBLE ENGINE MOUNT FIN CAN UNIT

1. Press fin can halves together.



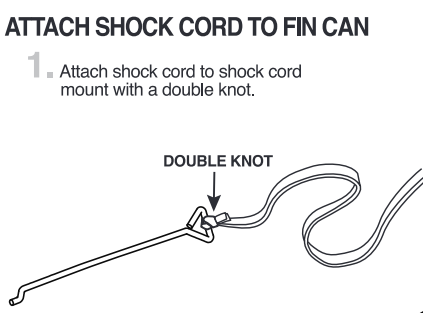
2.



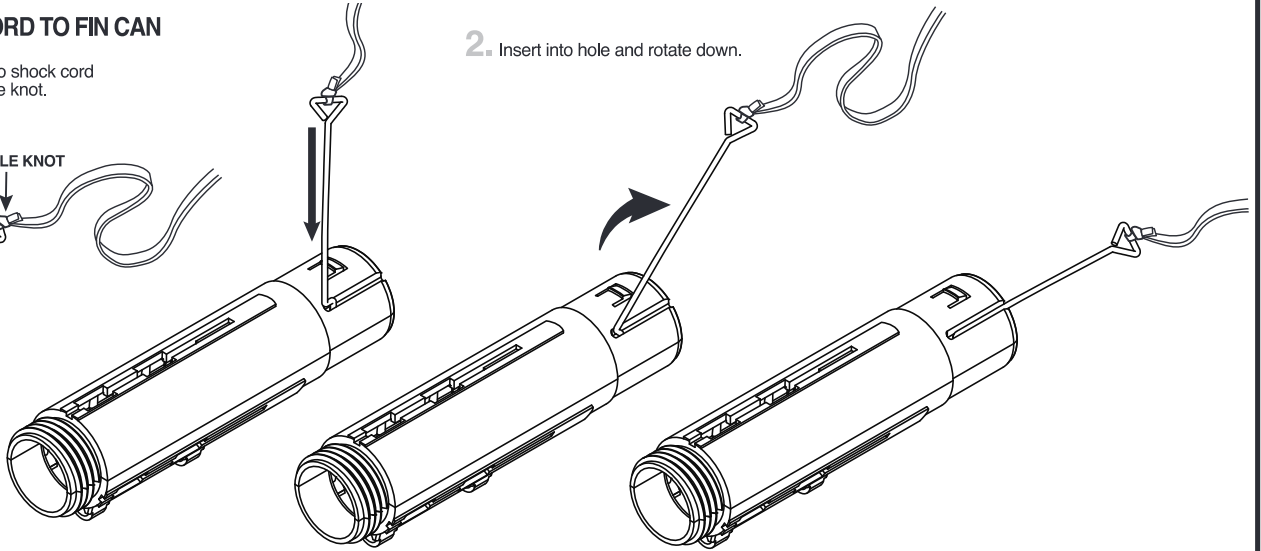
ATTACH SHOCK CORD TO FIN CAN

1. Attach shock cord to shock cord mount with a double knot.

DOUBLE KNOT

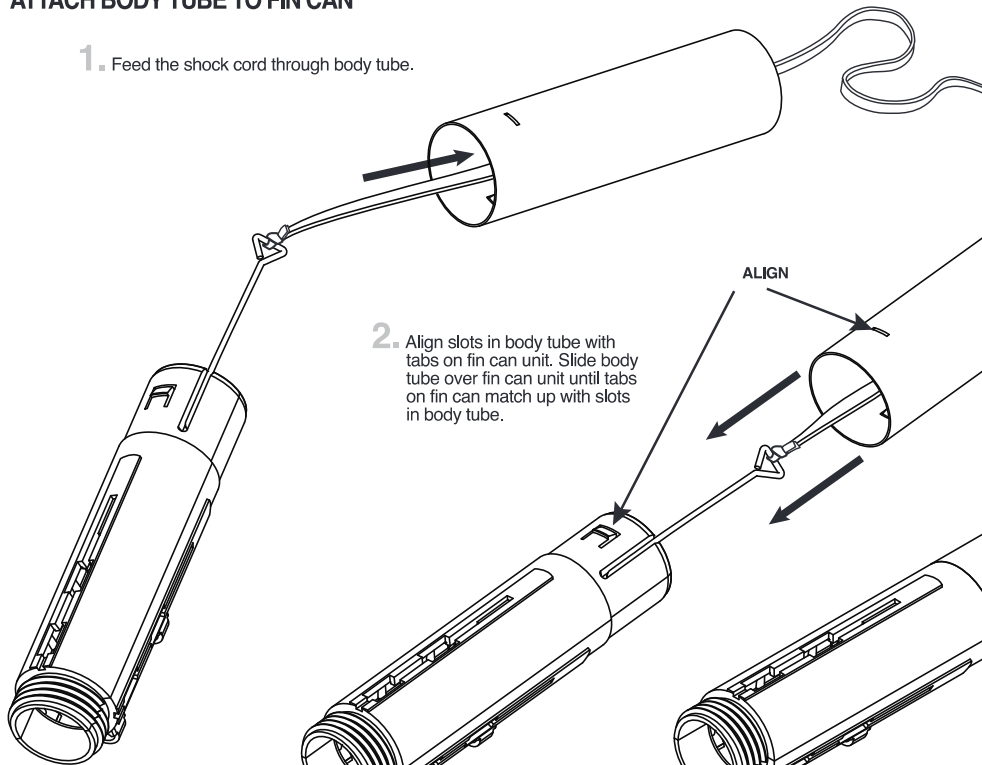


2. Insert into hole and rotate down.



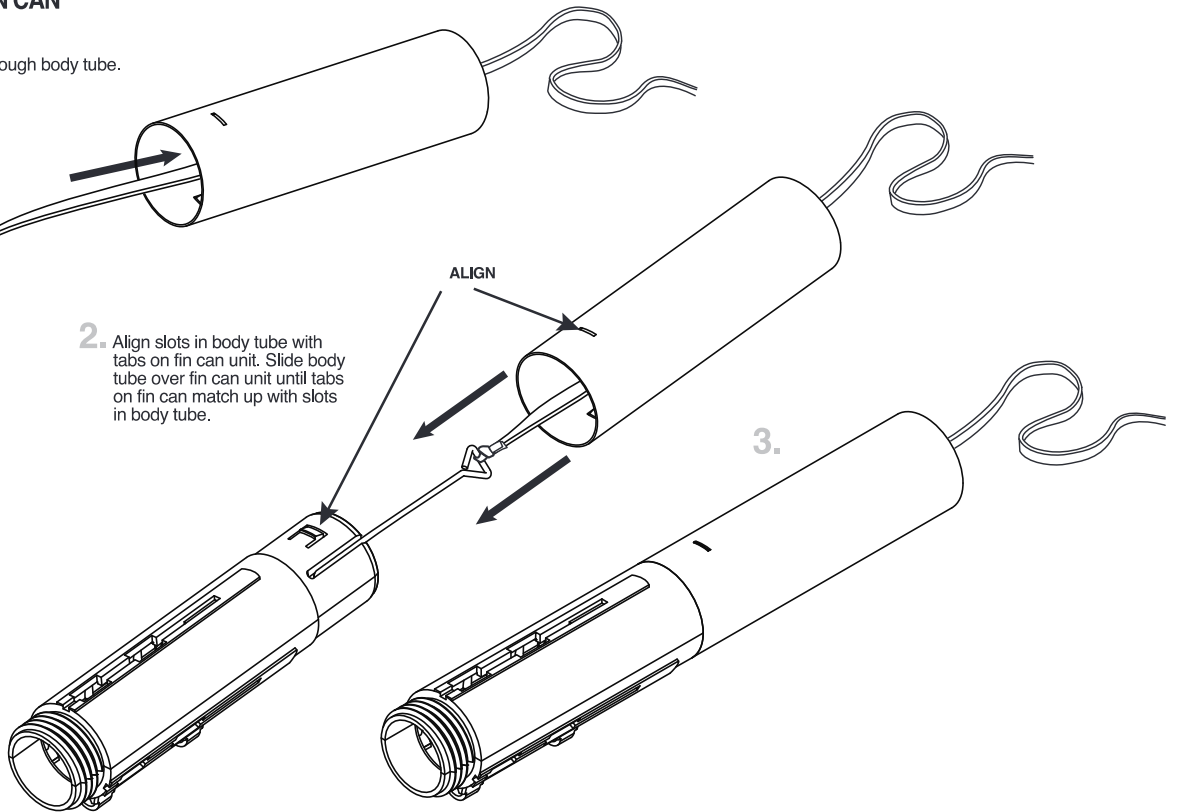
ATTACH BODY TUBE TO FIN CAN

1. Feed the shock cord through body tube.



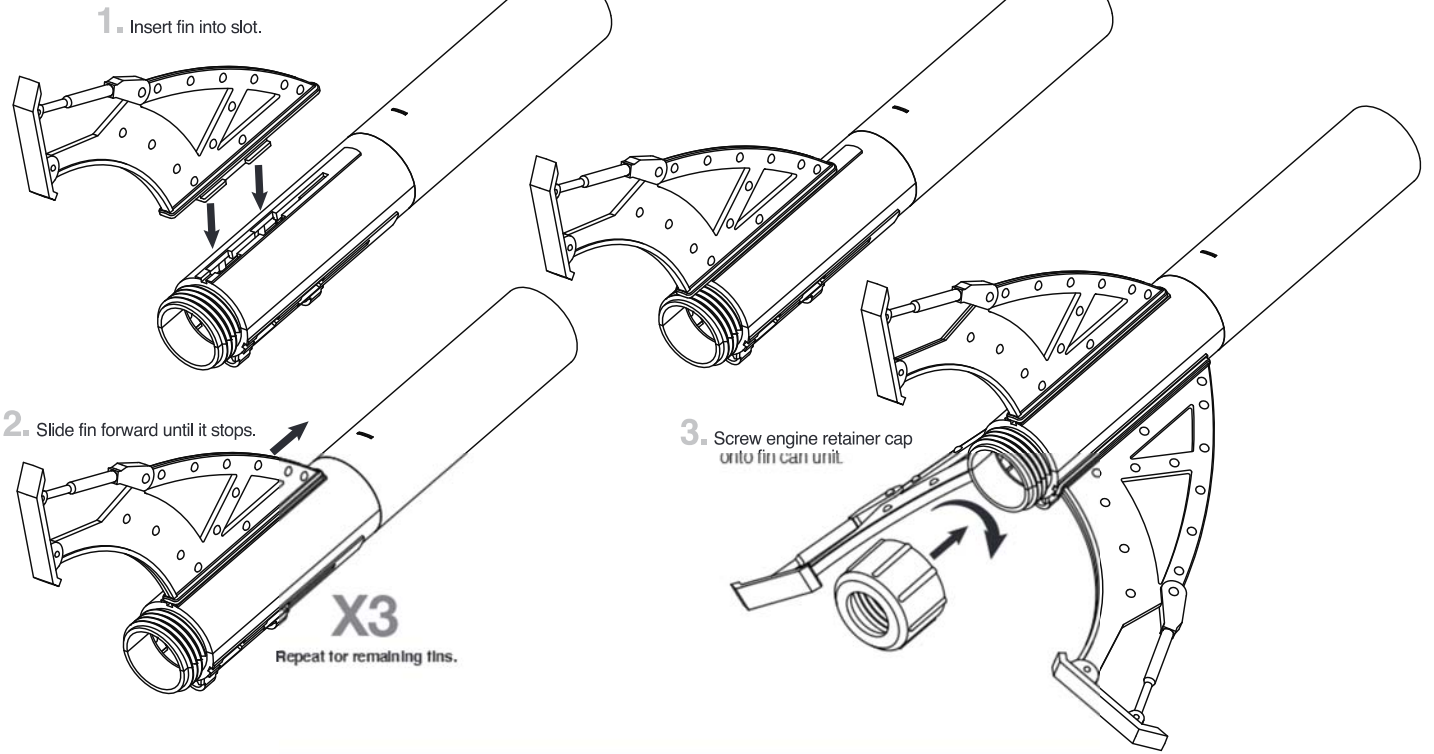
2. Align slots in body tube with tabs on fin can unit. Slide body tube over fin can unit until tabs on fin can match up with slots in body tube.

ALIGN

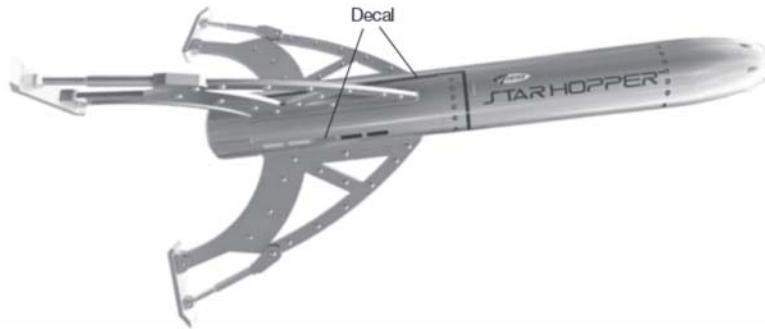


3.

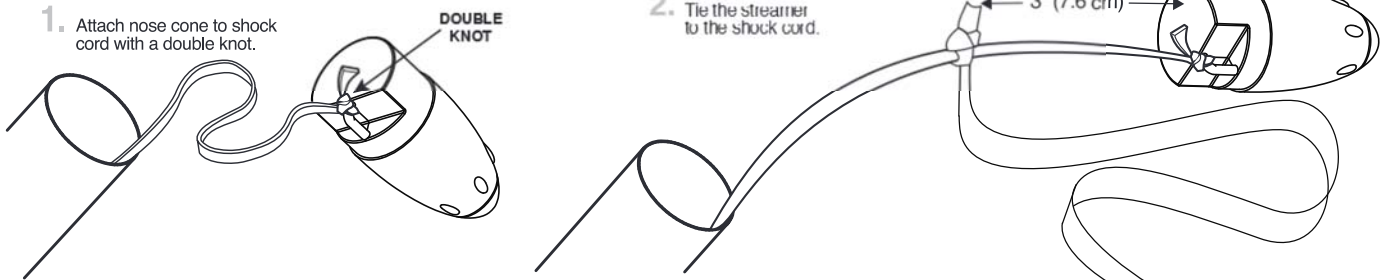
ATTACH FINS



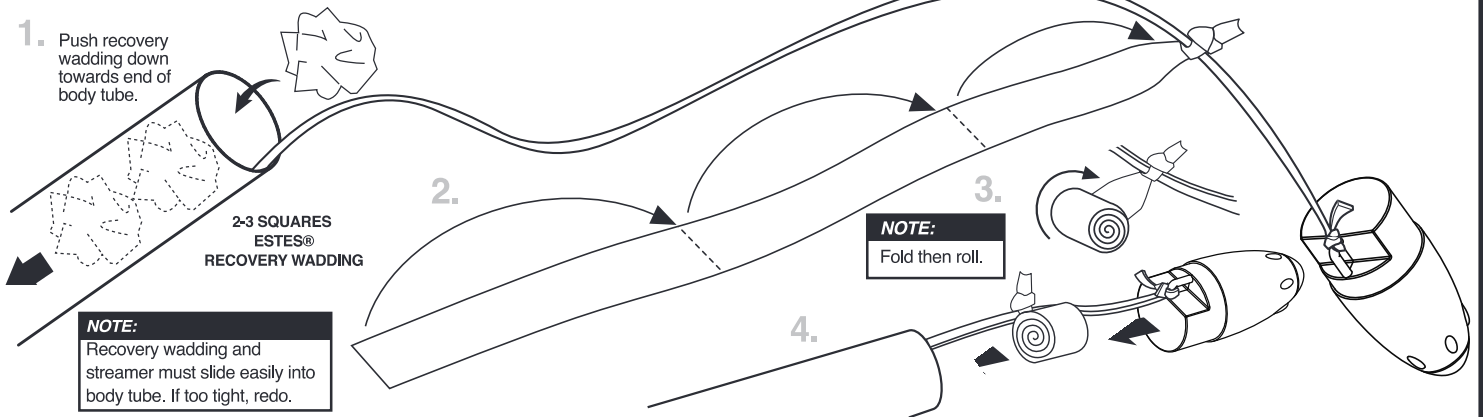
APPLY DECAL



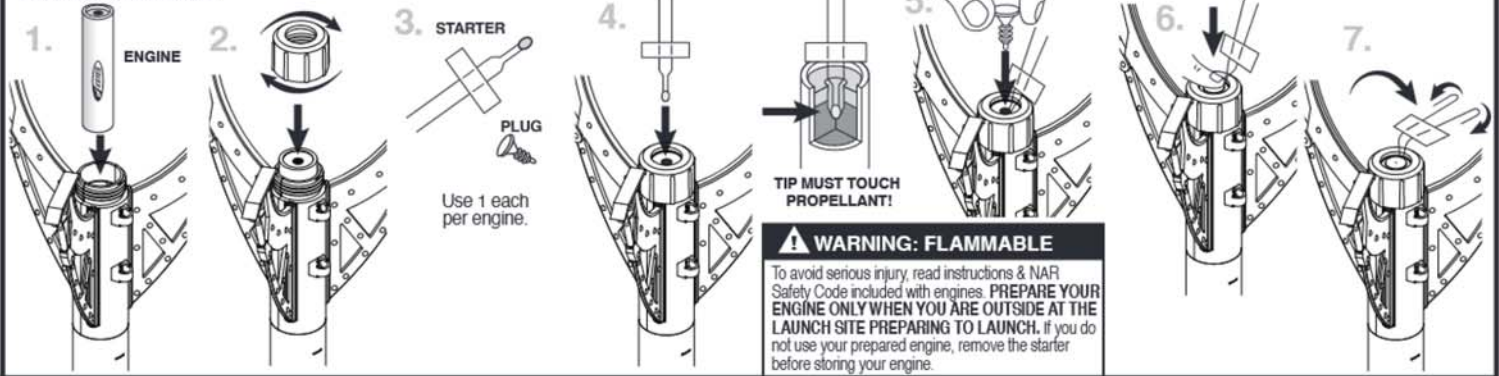
ATTACH THE NOSE CONE AND STREAMER



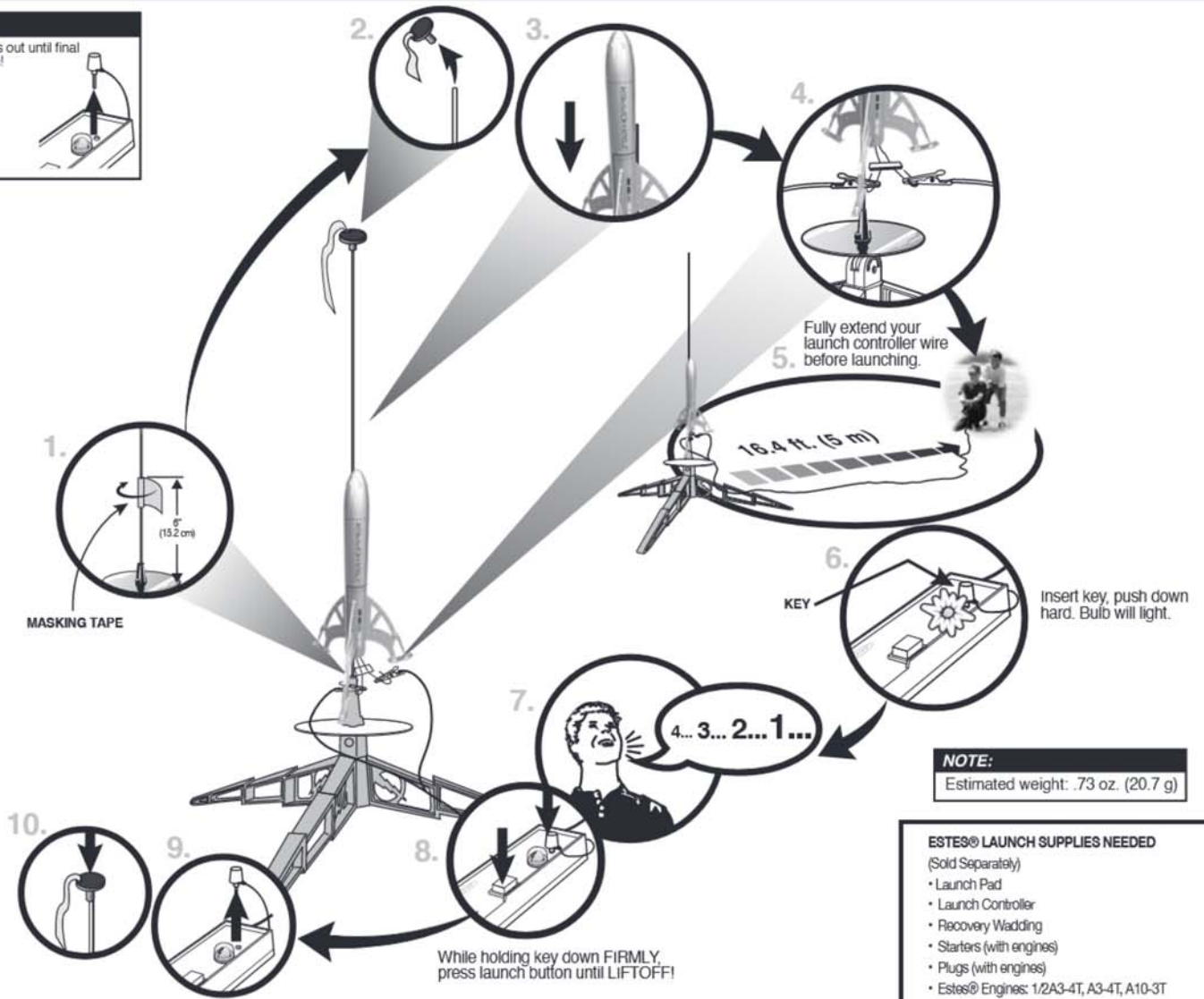
PREPARE FLIGHT RECOVERY



PREPARE ENGINE



COUNTDOWN AND LAUNCH



PRECAUTIONS



NAR SAFETY CODE



NO DRY GRASS OR WEEDS

PRE-LAUNCH CHECK For safety, never launch a damaged rocket. Check the rocket's body, nose cone and fins. Also, check the engine mount, recovery system and launch lug(s). Repair any damage before launching the rocket.

FLYING YOUR ROCKET Choose a large field (500 ft [152 m] square) free of dry weeds and brown grass. The larger the launch area, the better your chance of recovering your rocket. Football fields and playgrounds are great. Launch only with little or no wind and good visibility. Always follow the National Association of Rocketry (NAR) SAFETY CODE (enclosed).

MISFIRES TAKE THE KEY OUT OF THE CONTROLLER. WAIT ONE MINUTE BEFORE GOING NEAR THE ROCKET. Disconnect the micro-clips and remove the engine. Take the plug and starter out of the engine. A burned starter means the starter tip was not touching engine propellant. Install a new starter; be sure the tip is touching propellant inside the engine. Push the plug in place. Repeat steps under Countdown and Launch.